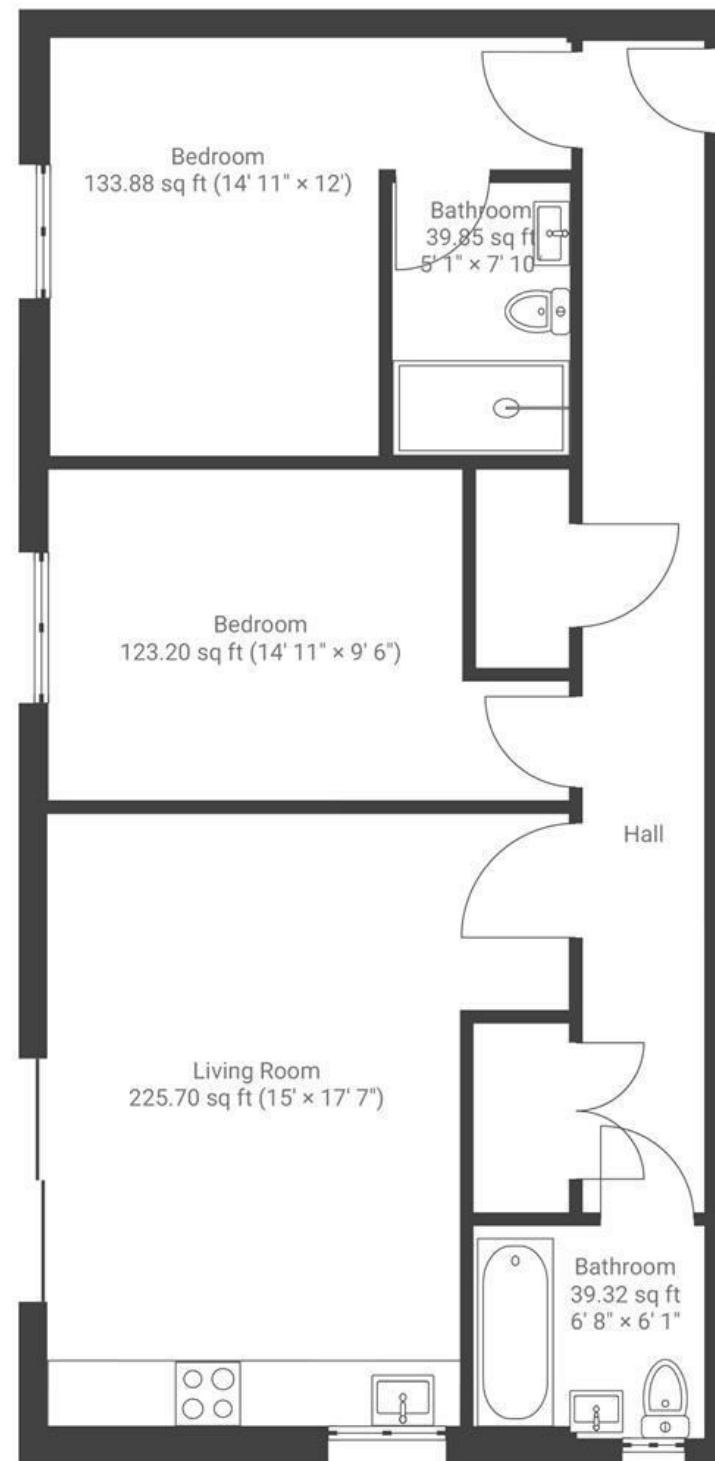


# Barton Court

## SPEEDWELL

APPROXIMATE FLOOR AREA  
69.7 SQM / 750 SQFT



**Boardwalk**

# Whitefield Road

SPEEDWELL, BRISTOL

£

£275,000



BS5 7FX

zzz

2 Bedrooms



2 Bathrooms

*"I bought the apartment in 2021 as a first-time buyer, and it quickly became my favourite place to unwind. One of just ten in the building, it offers a peaceful retreat with a strong sense of community. Located at the rear, the apartment overlooks Barton Fields, a quiet, green park that sometimes welcomes hot air balloons during the fiesta. Watching the tractor mow the grass in summer feels like a touch of the countryside in the city. Ideally situated between Fishponds and St George."*

